

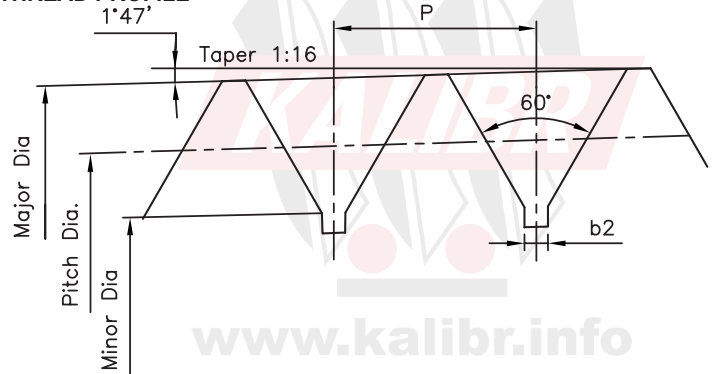
NPTF / PTF THREADS

Application: NPTF threads can provide pressure tight seal on threads without the use of a sealing compound (dry seal type) PTF are short gauges (less thickness) which are used for application similar to NPTF.

SPECIFICATION :

ANSI / ASME B1.20.6 – 1984 which is metric translation of ANSI B1.20.5 – 1978 and H-28 Part II 1957

NPTF / PTF THREAD PROFILE



MANUFACTURING RANGE

DIA IN INCH	TPI	Type of Thread Gauges used				
1/16, 1/8	27	Taper Plug Gauges	Plain Taper Plugs to check Crest of Threads.	Taper Ring Gauges	Check Plugs / Master Plugs to check L1 & L2 Taper Rings.	Crest Check Plain Taper Ring Gauge. 6 Step Design.
1/4, 3/8	18	L1 Basic		L1 Basic		
1/2, 3/4	14	L3 Basic		L2 Basic		
1, 1.1/4, 1.1/2, 2	11.5	OR		OR		
2.1/2, 3	8	L1 Step Limit		L1 Step Limit		
		L3 Step Limit		L2 Step Limit		

For Internal Threads (Thread Plug Gauges)

two types are recommended.

L1 – To check effective diameter of thread to hand tightness at the gauge line (large end dia.)

L3 – To check effective dia. of remaining thread length (small end dia.) and the taper cone.

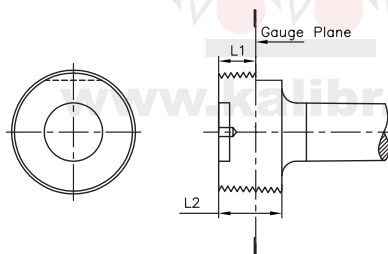
For External threads (Thread Ring Gauges)

two types are recommended.

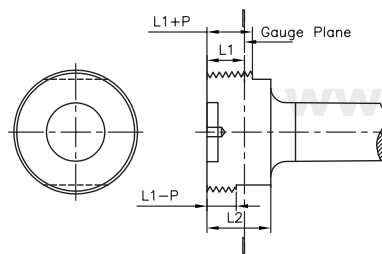
L1 – To check effective diameter of thread to hand tightness at the gauge line (large end dia.)

L2 – To check effective dia. of remaining thread length (small end dia.) and the taper of cone.

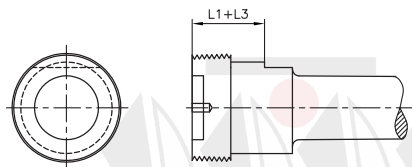
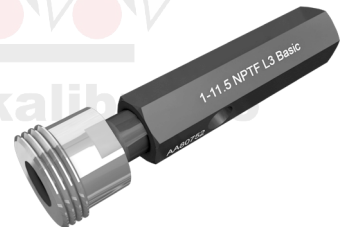
Normally L2 rings and L3 plugs are used in addition to L1 gauges, where more stringent, examination is required. The use of L2 and L3 gauges is only effective when the designed full thread length in the work piece is one thread longer than the nominal thread length.



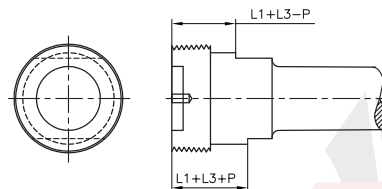
NPTF L1 Basic Plug



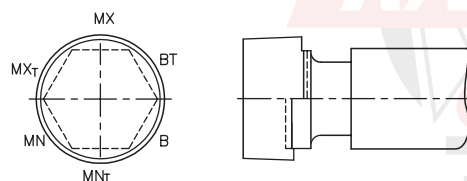
NPTF L1 Step Limit Plug



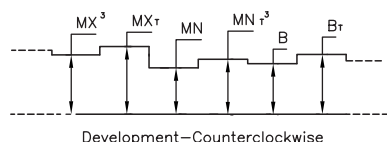
NPTF L3 Basic Plug



NPTF L3 Step Limit Plug

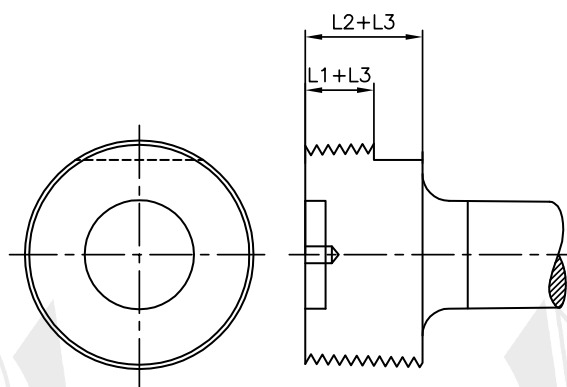
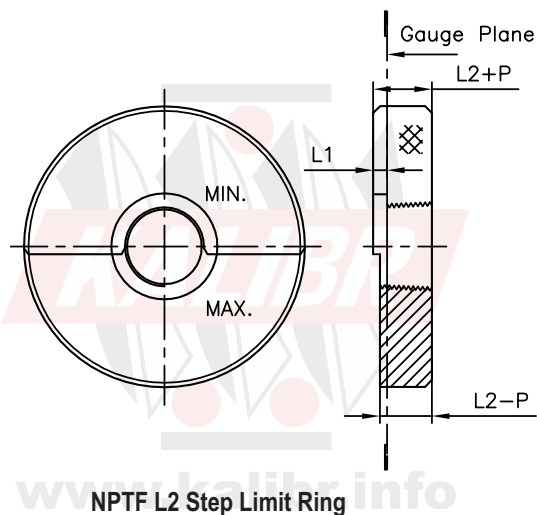
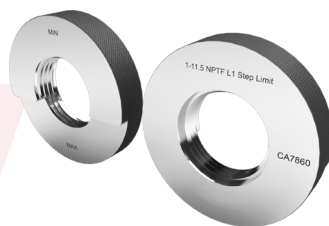
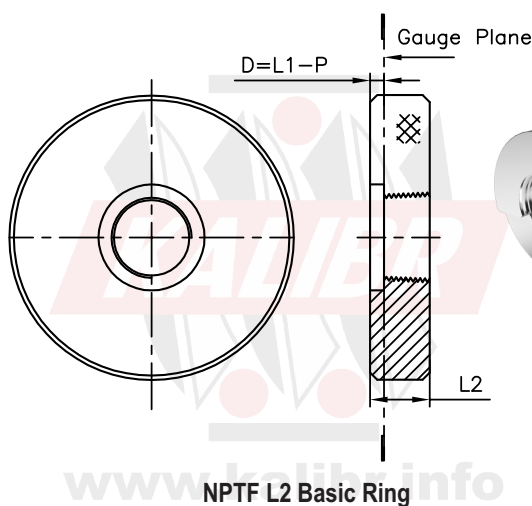
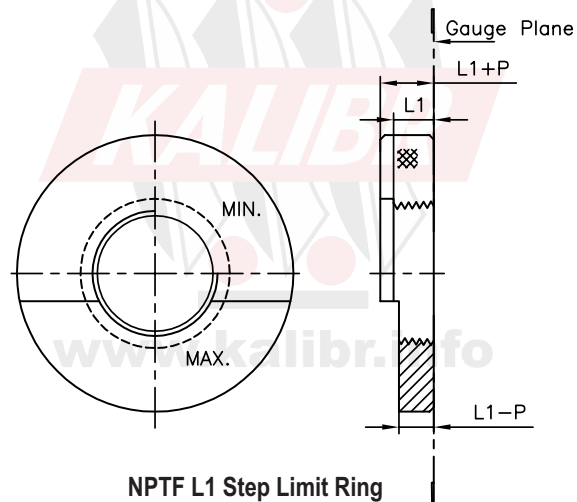
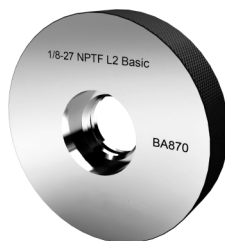
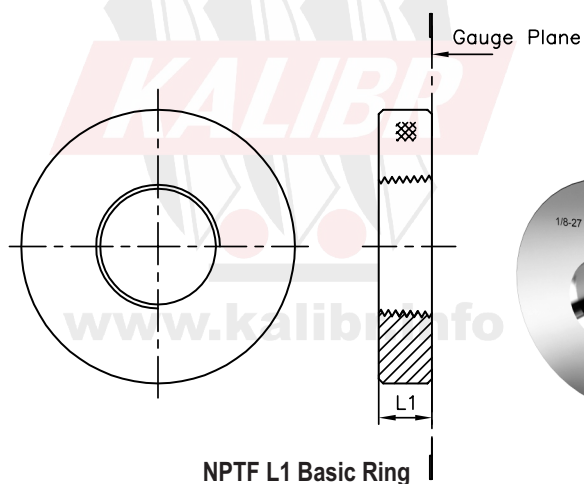


Taper Plain Plug To Check Crest Of Threads.

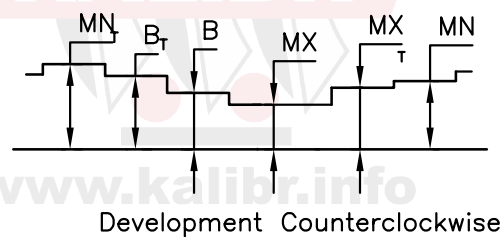
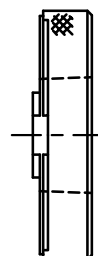
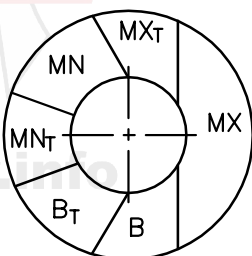
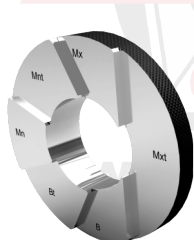


NPTF / PTF THREADS

Application: NPTF threads can provide pressure tight seal on threads without the use of a sealing compound (dry seal type) PTF are short gauges (less thickness) which are used for application similar to NPTF.



CP / Master Plug Gauge For Checking L1 & L2 Rings

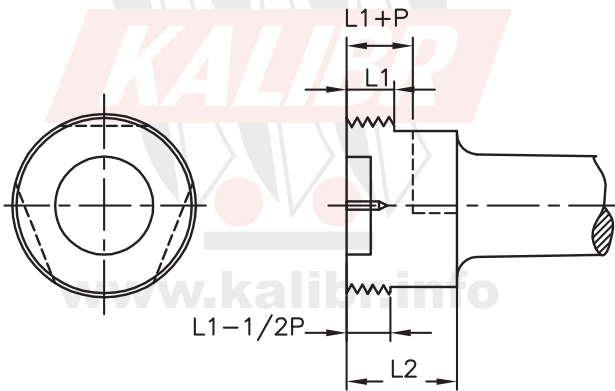


Crest Truncation Ring

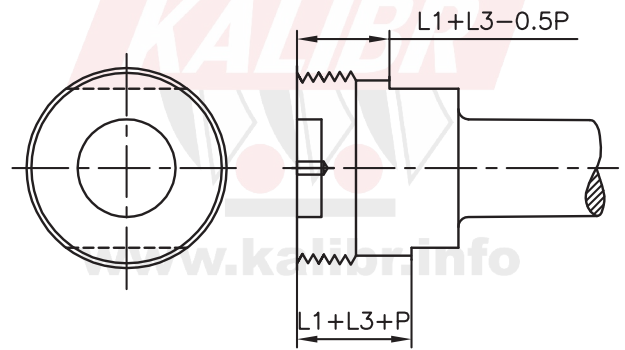
NPTF / PTF THREADS

Application: NPTF threads can provide pressure tight seal on threads without the use of a sealing compound (dry seal type) PTF are short gauges (less thickness) which are used for application similar to NPTF.

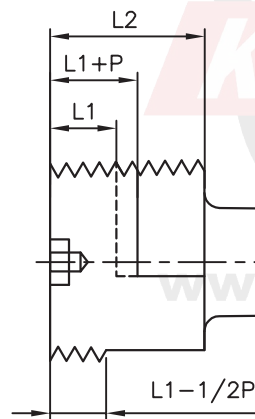
GAUGES FOR PTF (SHORT); NPSF, & NPSI THREADS



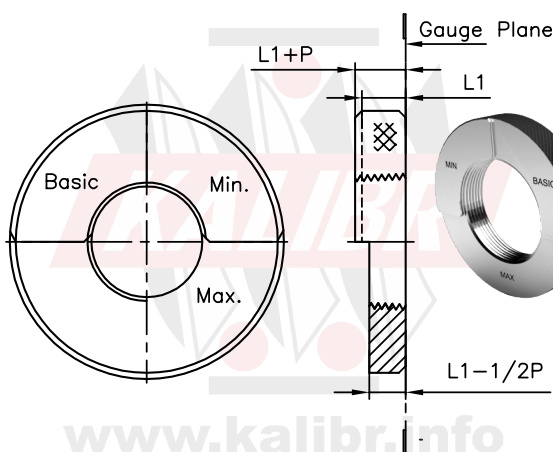
PTF SAE L1 short OR NPSF L1 PLUG



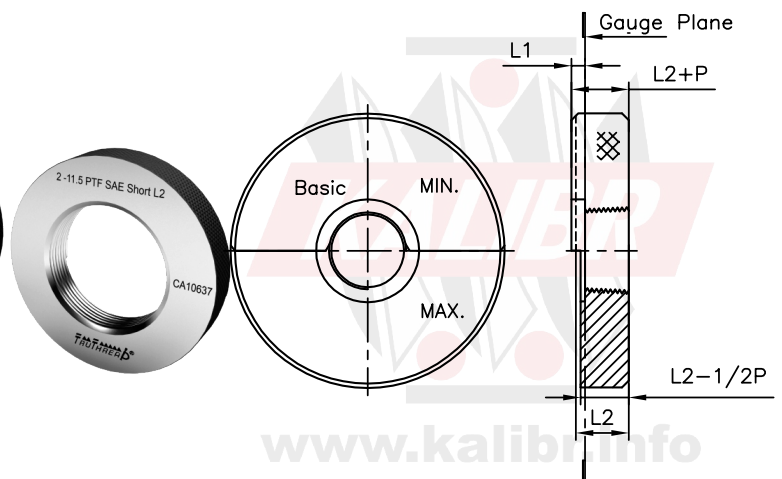
PTF SAE L3 short PLUG



NPSI L1 PLUG



PTF SAE L1 Short Ring



PTF SAE L2 Short Ring